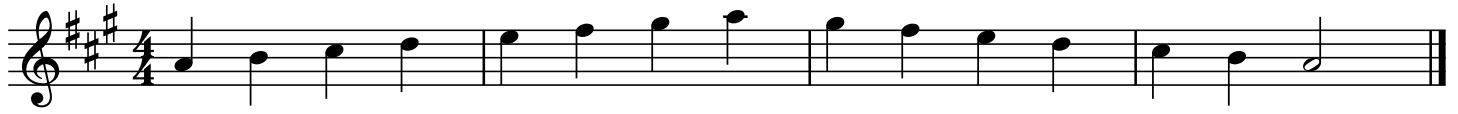


# Performance Reviews 2023

For current Intermediate Band members

## Saxophone

### 1a. Scale/Technical Work 1



### 1b. Scale/Technical Work 2



### 1c. Scale/Technical Work 3



## 2. Set Piece

Musical notation for the Set Piece. It consists of two staves in treble clef, key signature of two sharps (F# and C#), and 4/4 time. The first staff begins with a dynamic marking of *mf* and ends with a *p* marking. The second staff begins with a dynamic marking of *ff* and ends with a *pp* marking. The piece features various dynamics, slurs, and accents.

## 3. Own choice pieces (2)

Please play two short pieces that you have worked on with your tutor.  
Please do NOT play band pieces, but something from a different book.  
They should be no longer than 30 seconds each - if longer, you can play  
a short section of the whole piece.

Pieces may be from AMEB exam material, 'Movie Theme' books, or any  
other additional material your tutor has given you in your lessons.

You could also chose them from the "Classics Challenges" available to  
download from the band page on our school website.