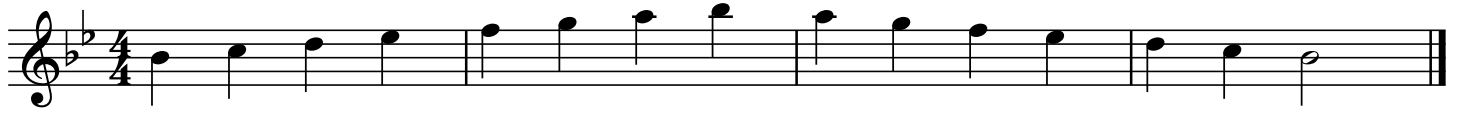


Performance Reviews 2023

For current Junior Band members

Flute

1a. Scale/Technical Work 1



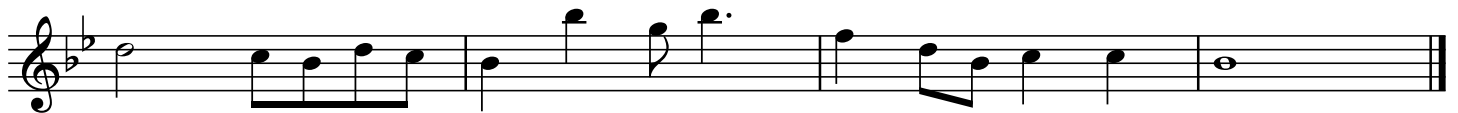
1b. Scale/Technical Work 2



1c. Scale/Technical Work 3



2. Set Piece



3. Own choice piece

You may play a short piece that you have worked on with your tutor.
Please do NOT play a band piece, but something from a different book.
This should be no longer than 30 seconds (if it is longer, only play a short section)

4. Woodwind, brass & bass guitar - Junior Challenges

Play any piece from the 'Junior Challenges' sheets
(Pick the hardest piece you can play well)